

Jahrgangsstufentest **ENGLISCH** an bayerischen Realschulen (2013)

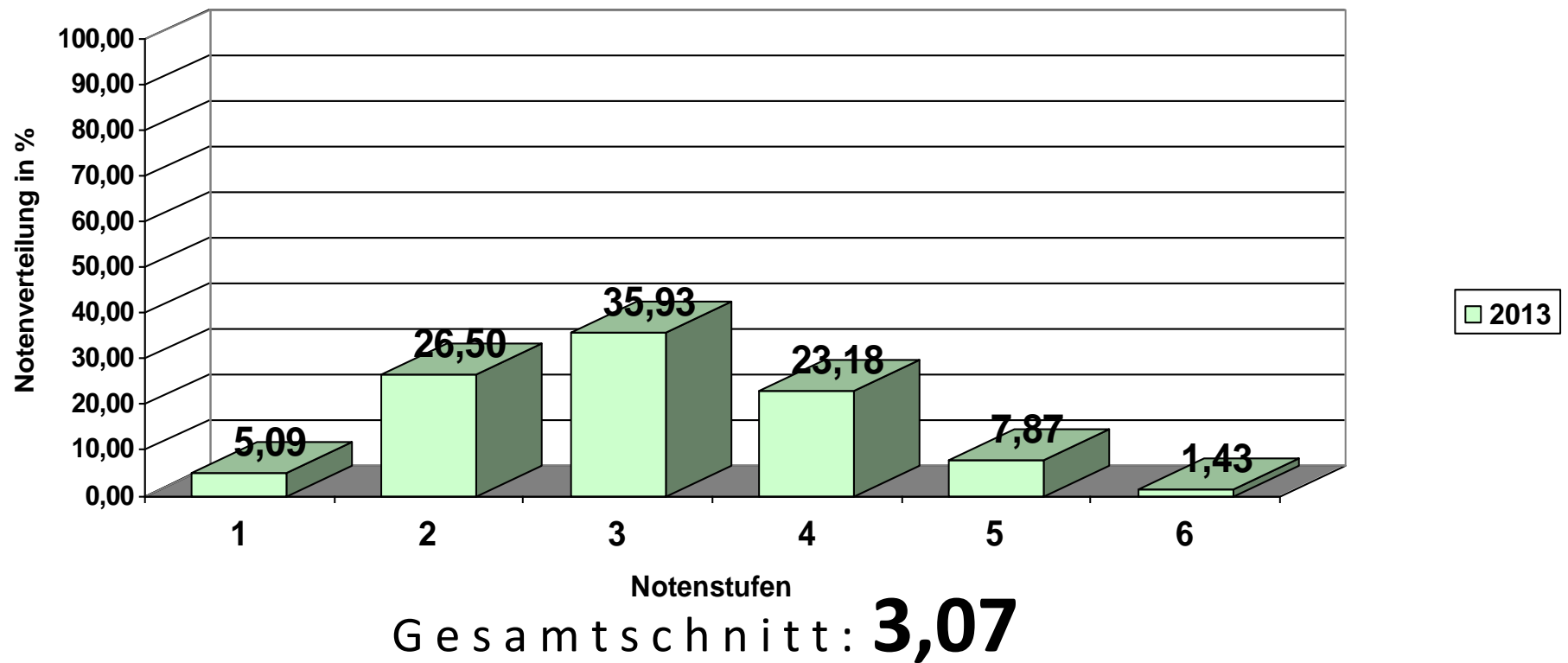
Teilnehmer: 39962 Schülerinnen und Schüler der 7. Jahrgangsstufe

Erläuterung der einzelnen Aufgaben:

Skill	Task	Task Type and Focus	No. of items	Task Format
Listening	1	Matching. Listening to identify key information .	5	Short neutral or informal dialogues. Five items and eight options.
Listening	2	Multiple-choice. Listening to identify key information and details .	5	Longer neutral or informal dialogue. Five discrete three-option multiple-choice items.
Listening	3	Note-taking. Listening to identify details (e.g. numbers, spelling of names etc.).	5	Longer neutral or informal monologue. Five gaps to fill with one or more words or numbers.
Reading	1	Matching. Gist understanding of real-world notices or messages. Reading for main message .	8	Matching eight notes with their message. Eight items and ten options (plus an example).
Reading	2	Multiple-Choice. Reading for detailed understanding and main idea(s).	7	One long text adapted from authentic newspaper and magazine articles. Seven discrete three-option multiple-choice items.
Writing		Continuous writing. Writing a short message, note, postcard, e-mail or article of about 60 words.	15	Short input text or rubric to prompt a written response. Three messages to communicate.
Use of English	1	Multiple-choice. Functional language . Reading and identifying appropriate response.	7	Seven discrete three-option multiple-choice items (plus an example) focusing on verbal exchange patterns.
Use of English	2	Multiple-choice cloze. Reading and identifying appropriate words with focus on structure and/or lexis.	8	Text of type candidates could be expected to write, for example a short letter, e-mail, postcard or diary entry . Eight four-option multiple-choice items (plus an integrated example).

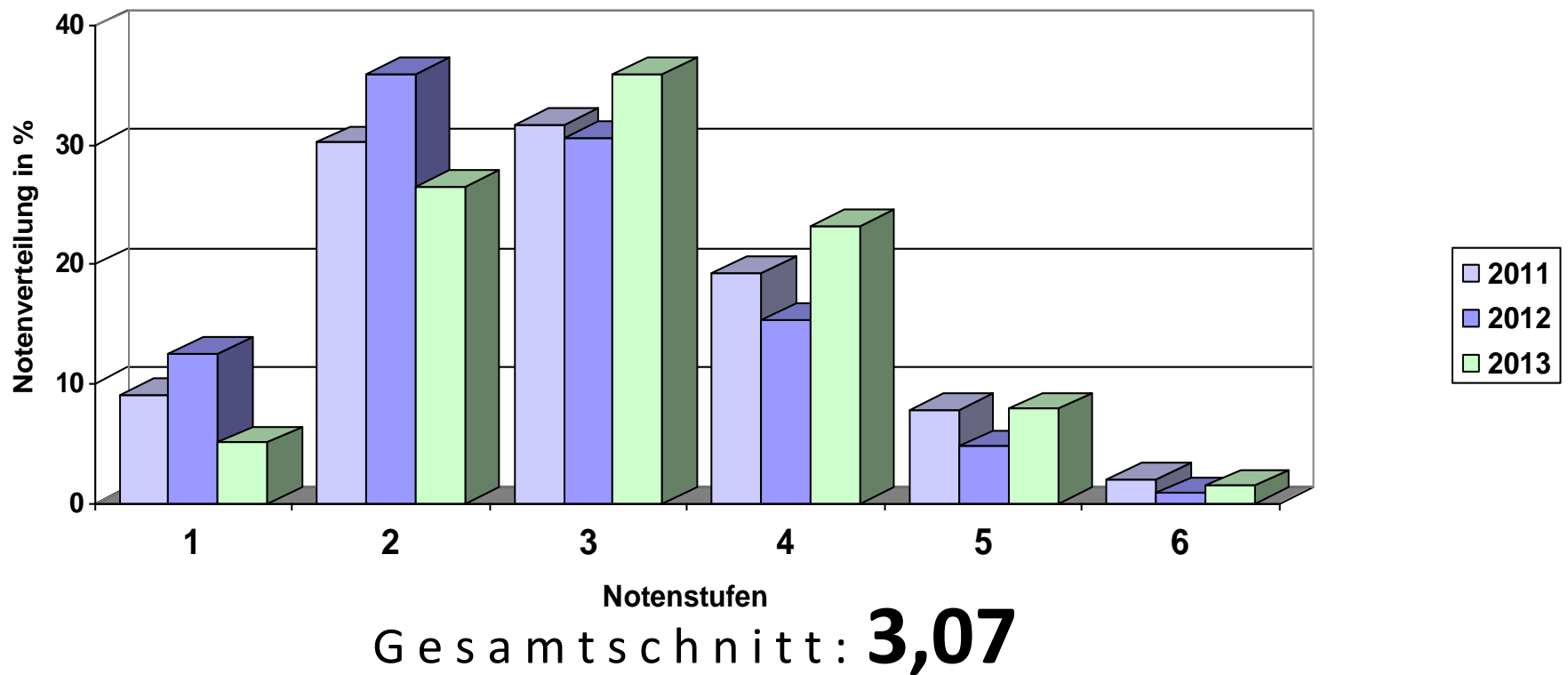
Jahrgangsstufentest **ENGLISCH** an bayerischen Realschulen (2013)

Notenverteilung



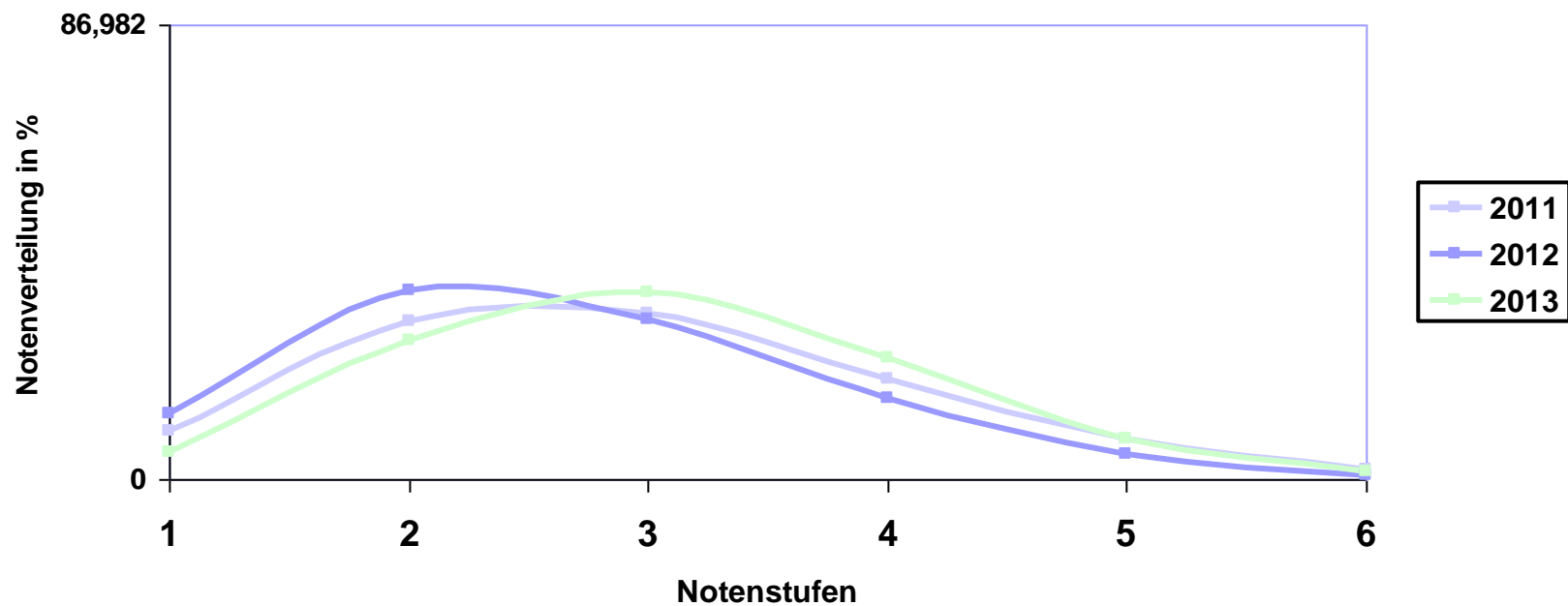
Jahrgangsstufentest **ENGLISCH** an bayerischen Realschulen (2013)

Notenverteilung: Vergleich 2011-2013



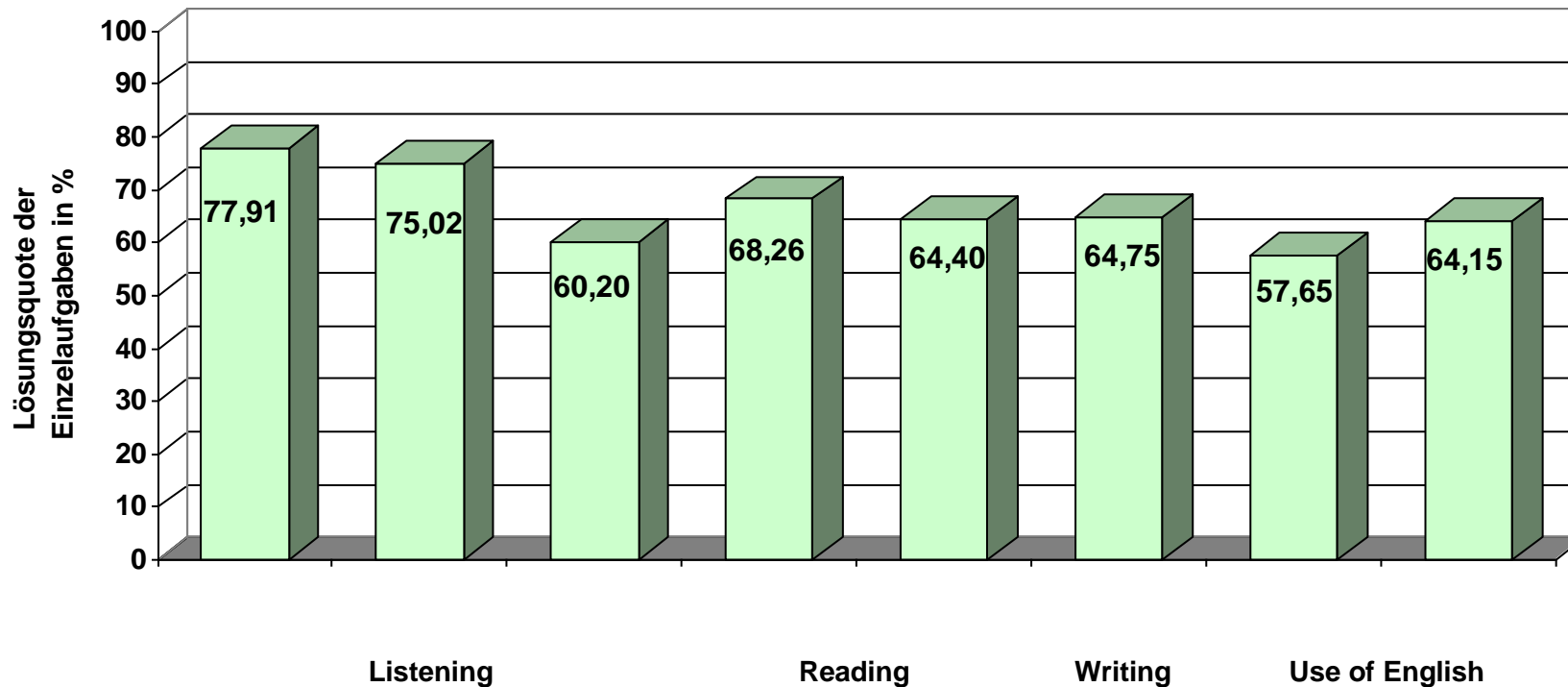
Jahrgangsstufentest **ENGLISCH** an bayerischen Realschulen (2013)

Notenverteilung: Vergleich 2011-2013



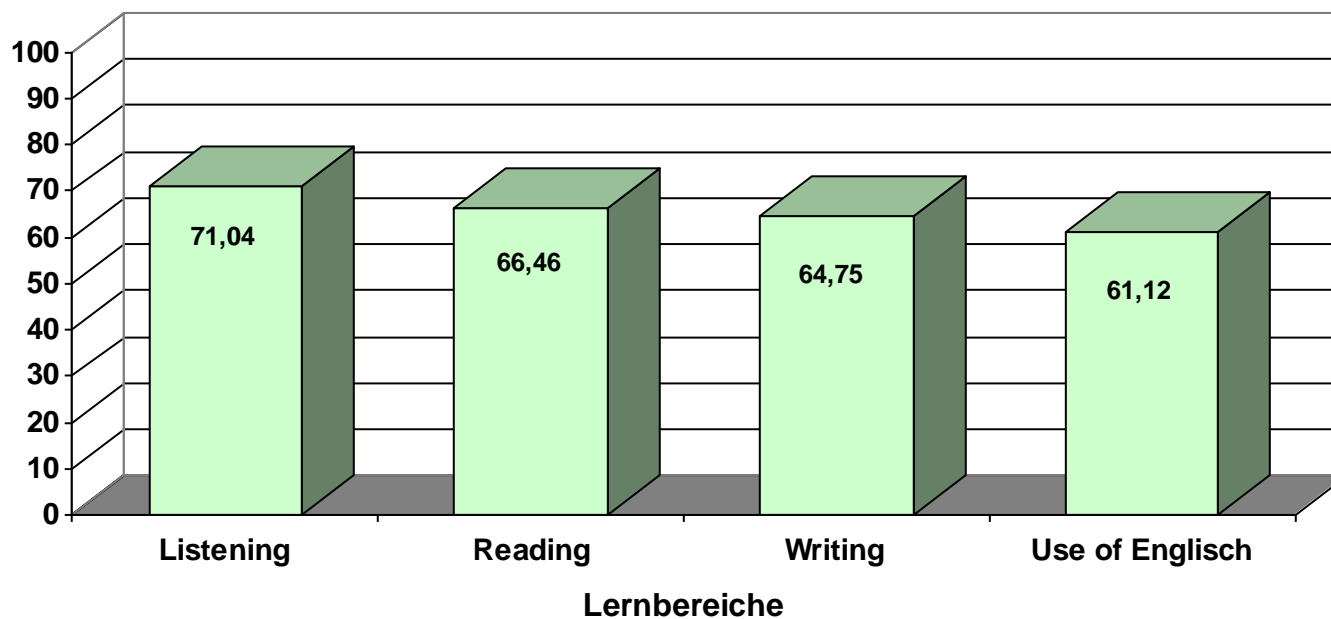
Jahrgangsstufentest **ENGLISCH** an bayerischen Realschulen (2013)

Einzelaufgaben: Lösungsquoten in Prozent



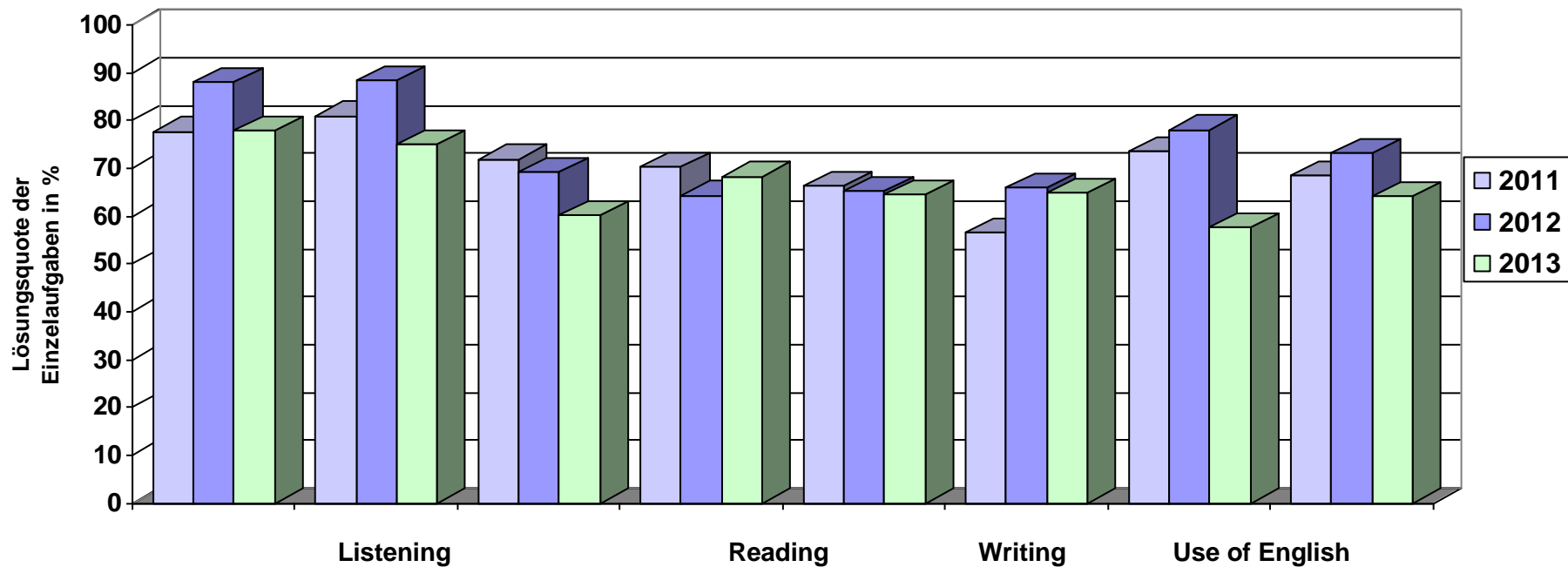
Jahrgangsstufentest ENGLISCH an bayerischen Realschulen (2013)

Lernbereiche: Lösungsquoten in Prozent



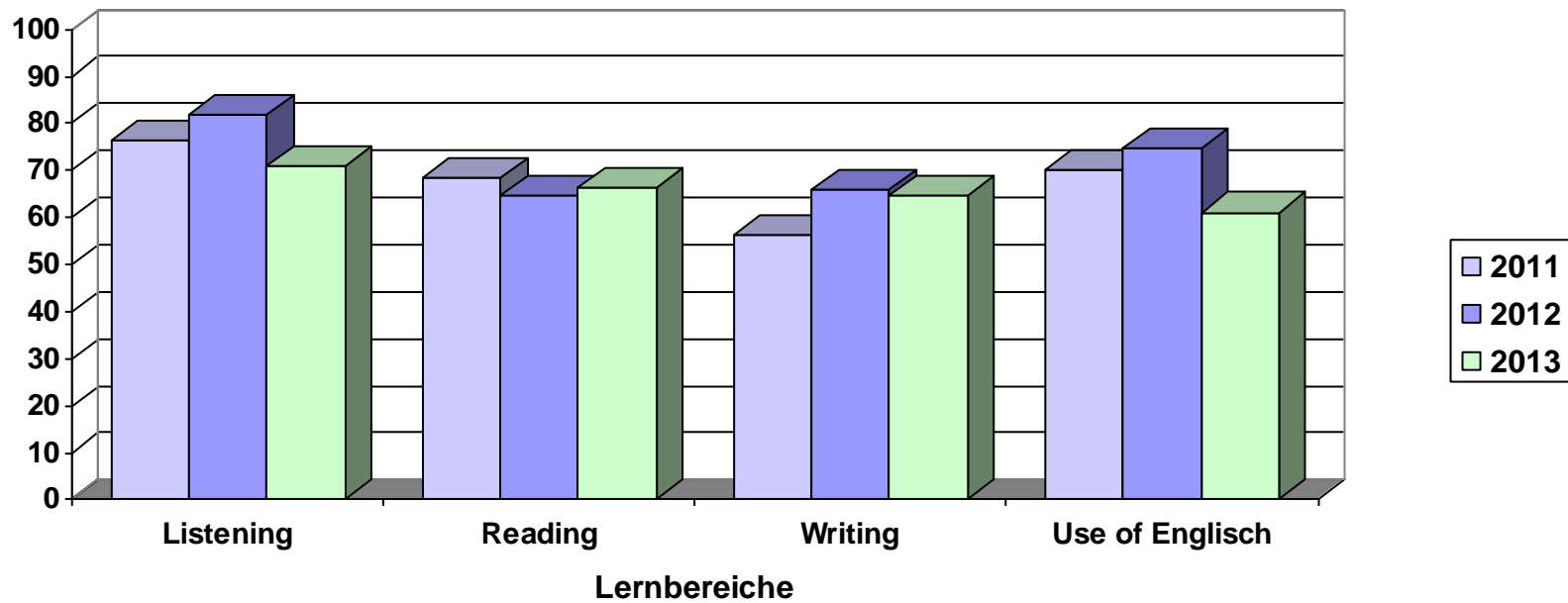
Jahrgangsstufentest **ENGLISCH** an bayerischen Realschulen (2013)

Einzelaufgaben: Vergleich 2011-2013



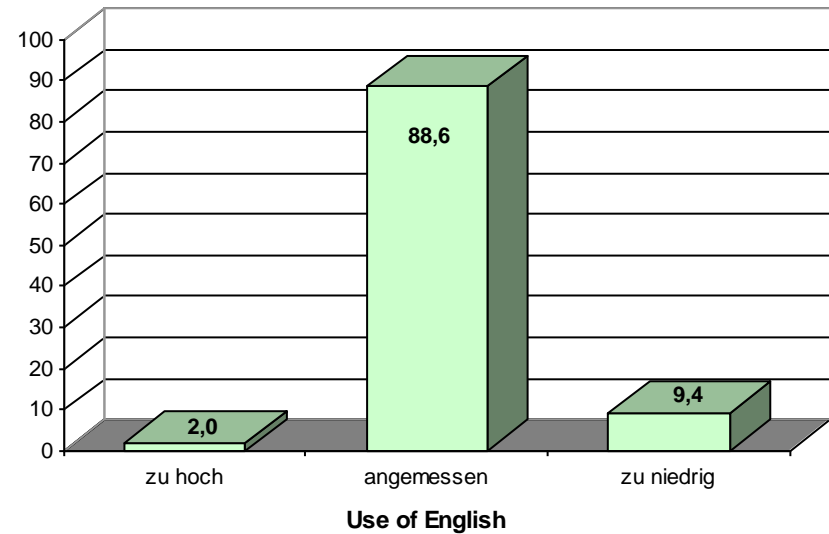
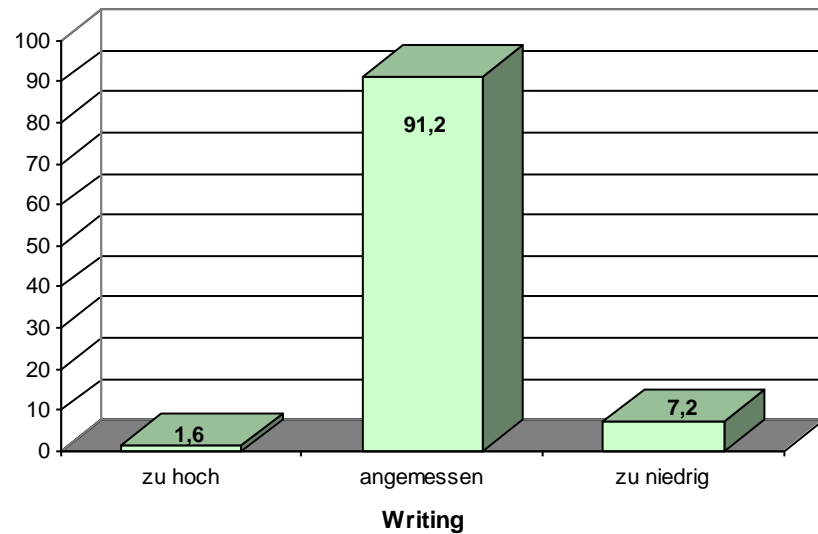
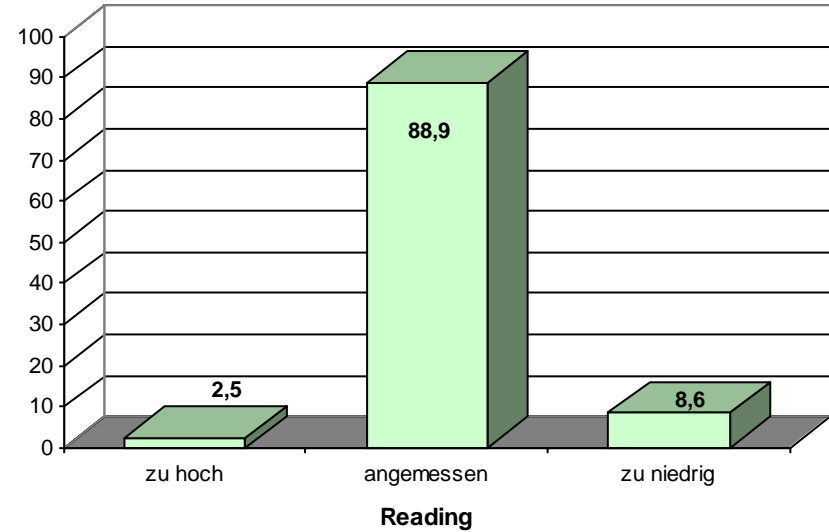
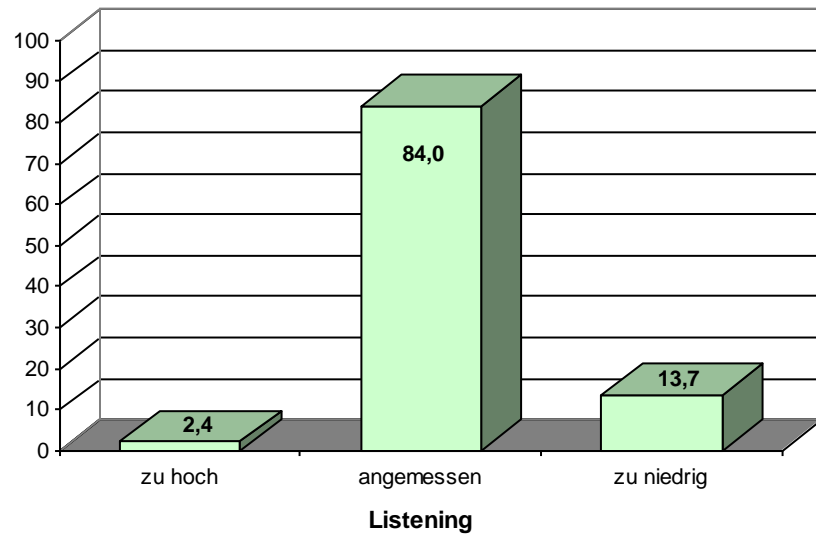
Jahrgangsstufentest ENGLISCH an bayerischen Realschulen (2013)

Lernbereiche: Vergleich 2011-2013



Jahrgangsstufentest ENGLISCH (2013)

Rückmeldung der Lehrkräfte: Bewertung des Anforderungsniveaus (in %)



Jahrgangsstufentest ENGLISCH (2013)

Rückmeldung der Lehrkräfte: Bewertung des Arbeitszeit (in %)

